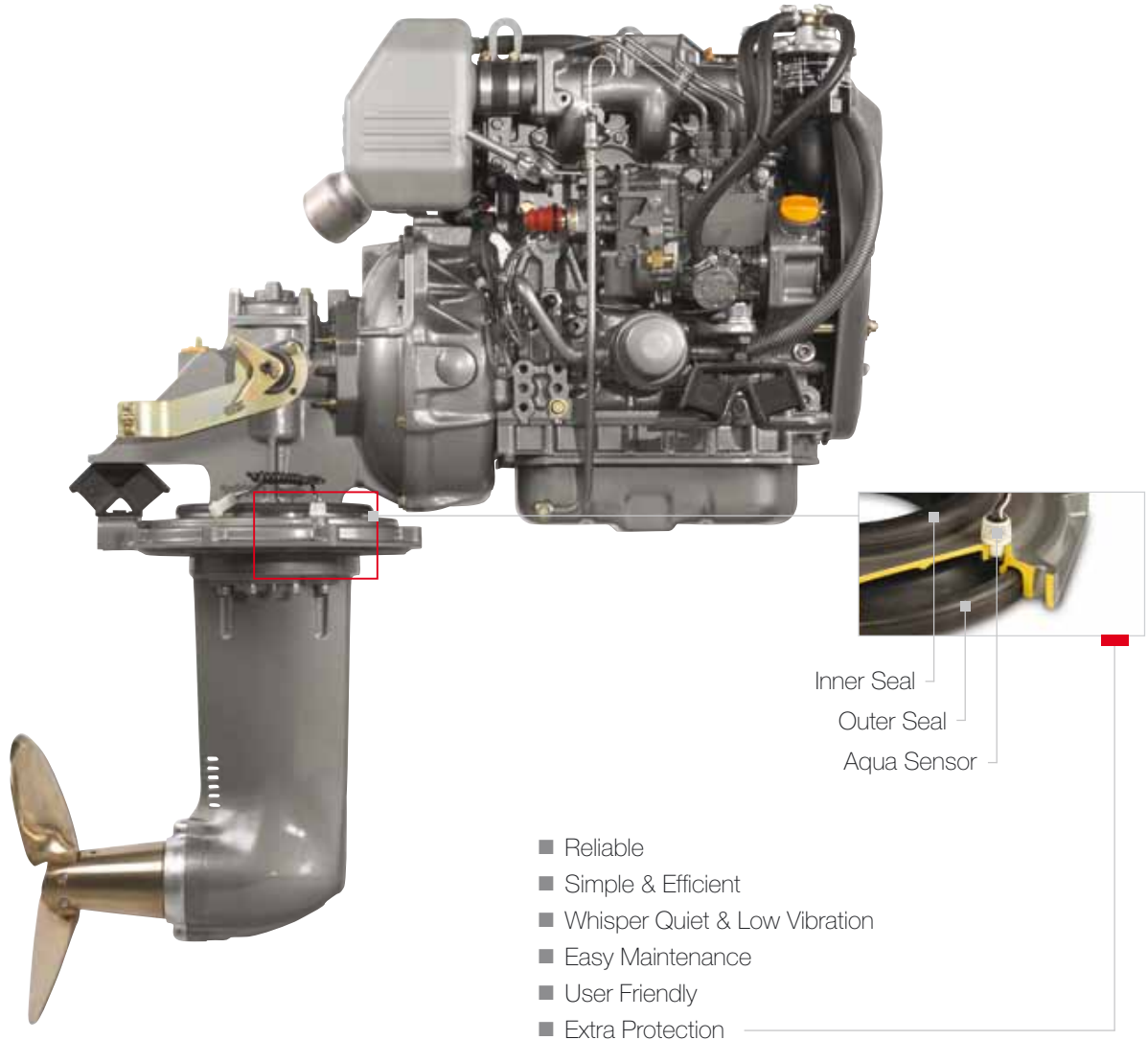


# Yanmar Saildrive SD50



Yanmar Saildrive Type	SD50	SD50-T
Reduction gear system	Constant mesh gear with cone clutch	Constant mesh gear with cone clutch
Reduction ratio (fwd / asn)	2.32/2.32	2.32/2.32
Propeller speed (fwd / asn)	1293/1293	1379/1379
Direction of rotation (propeller shaft - fwd)	Clockwise & counter clockwise viewed from flywheel side	Clockwise & counter clockwise viewed from flywheel side
Dry weight Saildrive	40 kg (88 lbs)	42 kg (93 lbs)

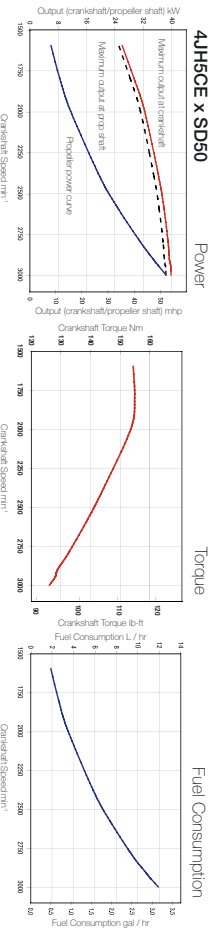
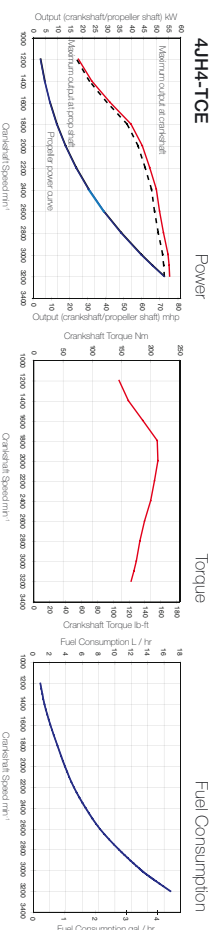
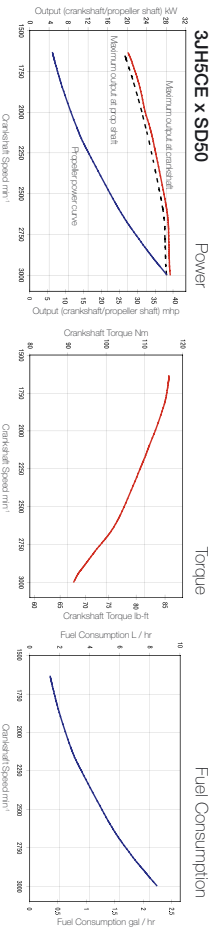


<b>Engine Model</b>	<b>3JH5CE x SD50</b>	<b>4JH5CE x SD50</b>	<b>4JH4-TCE x SD50-T</b>
<b>Configuration</b>	4-stroke, vertical, water cooled diesel engine	4-stroke, vertical, water cooled diesel engine	4-stroke, vertical, water cooled diesel engine
<b>Maximum output at crankshaft</b>	* 28.7 kW (39 mhp) / 3000 rpm	* 39.6 kW (54 mhp) / 3000 rpm	* 55.2 kW (75 mhp) / 3200 rpm
<b>Continuous rating output at crankshaft</b>	26.7 kW (36.3 mhp) / 2907 rpm	36.8 kW (50 mhp) / 2907 rpm	50.2 kW (68 mhp) / 3100 rpm
<b>Displacement</b>	1.64 L (100 cu in)	2.19 L (134 cu in)	1.99 L (122 cu in)
<b>Bore x stroke</b>	88 mm x 90 mm (3.46 in x 3.54 in)	88 mm x 90 mm (3.46 in x 3.54 in)	84 mm x 90 mm (3.31 in x 3.54 in)
<b>Cylinders</b>	3	4	4, 4-valves per cylinder
<b>Combustion system</b>	Direct Injection	Direct Injection	Direct Injection
<b>Aspiration</b>	Natural aspiration	Natural aspiration	Turbo charged
<b>Starting system</b>	Electric starting 12 V - 1.4 kW	Electric starting 12 V - 1.4 kW	Electric starting 12 V - 1.4 kW
<b>Alternator</b>	12 V - 80 A (60 A optional)	12 V - 80 A (60 A optional)	12 V - 80 A
<b>Cooling system</b>	Fresh water cooling	Fresh water cooling	Fresh water cooling
<b>Lubrication system</b>	Enclosed, forced lubricating system	Enclosed, forced lubricating system	Enclosed, forced lubricating system
<b>Lubrication oil for Salfdrive</b>	API GL4 or GL5 and SAE 80W90 or 90, or Quicksilver High Performance Gear Lube	API GL4 or GL5 and SAE 80W90 or 90, or Quicksilver High Performance Gear Lube	Quicksilver High Performance Gear Lube
<b>Direction of rotation (propeller)</b>	Counter clockwise viewed from flywheel side	Counter clockwise viewed from flywheel side	Counter clockwise viewed from flywheel side
<b>Dry weight with Salfdrive</b>	213 kg (470 lbs)	240 kg (529 lbs)	249 kg (549 lbs)
<b>Environmental</b>	EU RCD, US EPA Tier3, BSO II & EMC	EU RCD, US EPA Tier3, BSO II & EMC	EU RCD, US EPA Tier 3, BSO II & EMC
<b>Engine mounting</b>	Rubber type flexible mounting	Rubber type flexible mounting	Rubber type flexible mounting

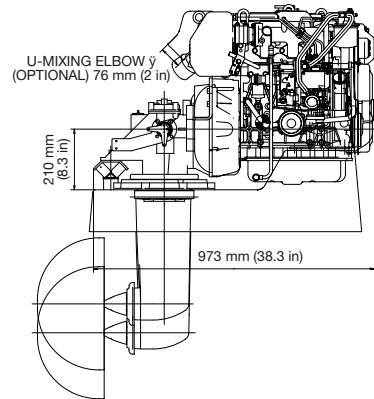
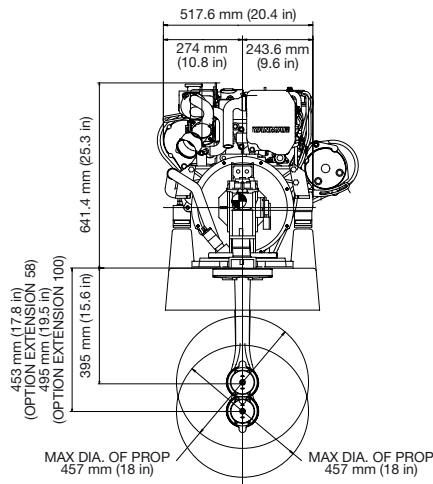
NOTE: Fuel condition: Density at 15°C = 0.84 g/cm<sup>3</sup>; 1kW = 1.3596 mhp = 1.3410 HP

\* Fuel temperature 40°C at the inlet of the fuel injection pump (ISO 9695)

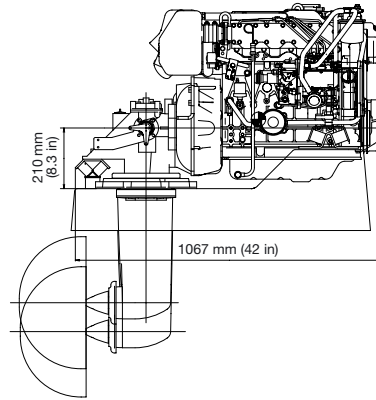
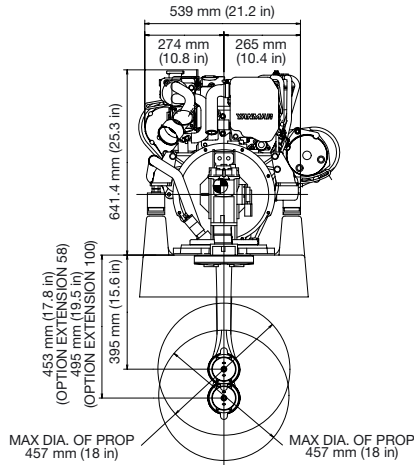
Technical data is according to ISO 9685 / 3046



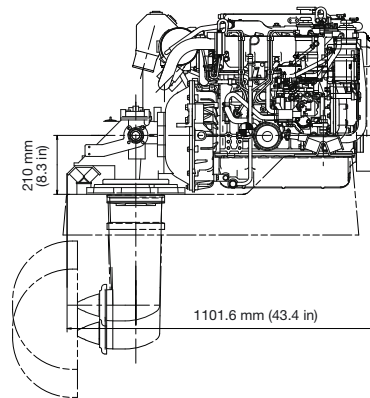
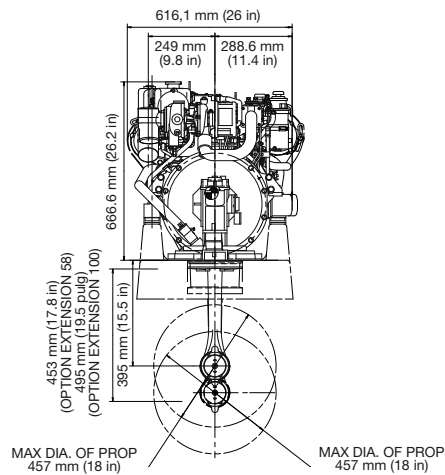
3JH5CE



4JH5CE x SD50



4JH4-TCE x SD50-T



Yanmar Marine International B.V.  
Brugplein 11  
1332 BS Almere-de Vaart  
The Netherlands

Yanmar Marine USA Corp.  
101 International Parkway  
Adairsville,  
Georgia 30103  
USA

Yanmar Asia (S) Corp. Ltd.  
4 Tuas Lane  
Singapore 638613

Yanmar Co., LTD  
5-3-1 Tsukaguchi - Honmachi  
Amagasaki  
Japan

2008-12 Yanmar Marine®, Inc. All rights reserved, Printed in EC

[www.yanmarmarine.com](http://www.yanmarmarine.com)

